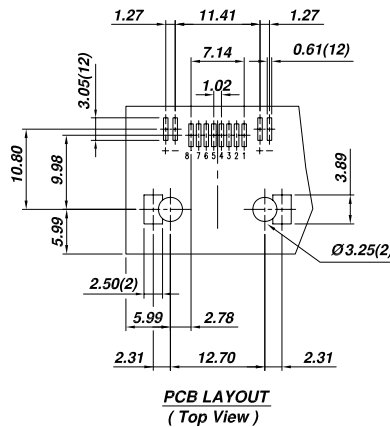
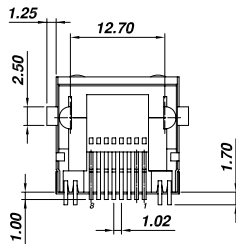
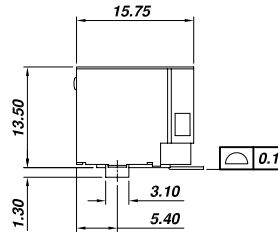
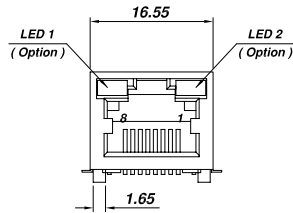


RoHS Compliant



PCB LAYOUT  
(Top View)

LED Designation :					
Code	Forward	Reverse	Code	Forward	Reverse
G	Green	---	4	Yellow	Red
Y	Yellow	---	5	Green	Yellow
R	Red	---	6	Yellow	Green
O	Orange	---	9	Red	Green
3	Green	Red	0	Red	Yellow

**SPECIFICATION :**

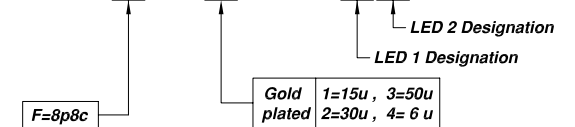
**1. Electrical Char.**

- Insulation Resistance : 500M-Ohm Min. 500V DC. for 1 minute.
- Contact Resistance : 30milli-Ohm Max.
- Rating Current : 1.5A Max.
- Rating Voltage : 150V AC.
- Dielectric Voltage : 1,000 Vrms at 1MA 60 Sec. Min.

**2. Physical char.**

- Housing : Nylon (UL 94V-0), Soldering Temperature: 260°C for 5 Sec.
- Color : Black Color
- Spring Wire :  
0.35mm Thickness Phosphor bronze Gold Plating Over Nickel
- Shielded : Brass Plating Nickel
- Temperature Range : - 40°C / +85°C
- Durability : 750 Mating cycles Min.

**AJ-069SH-8-F-RX-N1-XX**



**ALLSUN CORPORATION**

9FL, NO. 292 SEC. 7 CHENG TEH ROAD, TAIPEI TAIWAN.  
E - mail Address : allsun @ globalsources. com

**TITLE**

**RJ45 SIDE ENTRY S.M.T. JACK WITH LED  
UL & cUL FILE NO. E131820**

**MODULAR JACKS ASSY FOR  
AJ-069SH-8-F-RX-N1-XX**

**SCALE SIZE DWG. NO. 9769S-8L SERIES**

DWG. NO.	NOT SCALED DRAWING	TOLERANCE UNLESS OTHERWISE NOTICE	INCH	MM	DR.	DATE
	AST069A05-1	THIRD ANGLE PROJECTION	LINEAR	MM INCH	.00±0.01 .000±0.005 .0000±0.002	Steven CK'D Johnn APP'D Billy
MM INCH		ANGLE +0° 30'	RADII	+0.45 -0.15		