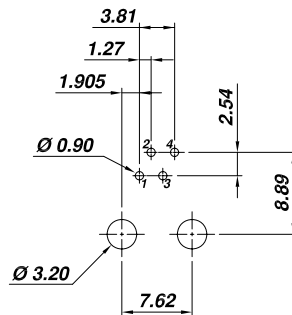
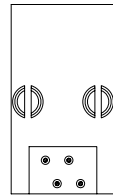
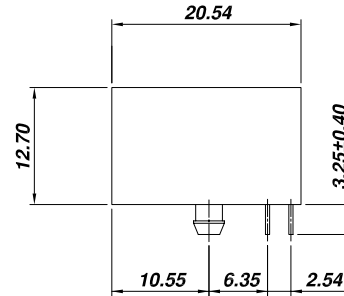
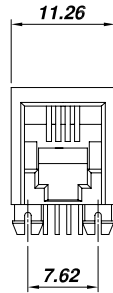


RoHS Compliant



PCB LAYOUT
(Top View)

SPECIFICATION :

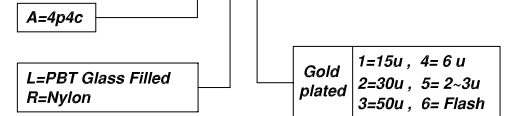
1. Electrical Char.

- Insulation Resistance : 500M-Ohm Min. 500V DC. for 1 minute.
- Contact Resistance : 30milli-Ohm Max.
- Rating Current : 1.5A Max.
- Rating Voltage : 150V AC.
- Dielectric Voltage : 1,000 Vrms at 1MA 60 Sec. Min.

2. Physical char.

- Housing (Option) : For Waving Soldering Process
 - PBT Glass Filled (UL 94V-0),Soldering Temperature:235°C for 5 Sec.
 - Nylon (UL 94V-0),Soldering Temperature:260°C for 5 Sec.
- Color : Black Color
- Spring Wire :
 - 0.45mm Dia. Phosphor bronze Gold Plating Over Nickel.
- Temperature Range : - 40°C / +85°C
- Durability : 750 Mating cycles Min.

AJ-007-4-A-XX-N



ALLSUN CORPORATION

9FL,NO.292 SEC.7 CHENG TEH ROAD.TAIPEI TAIWAN.
E - mail Address : allsun @ globalsources. com

TITLE

RJ11 SIDE ENTRY PCB JACK
UL & cUL FILE NO. E131820

MODULAR JACKS ASSY FOR
AJ-007-4-A-XX-N

SCALE SIZE DWG. NO. 9634 SERIES

NOT SCALED DRAWING	TOLERANCE UNLESS OTHERWISE NOTICE	INCH	MM	DR.	DATE
	LINEAR	$\frac{MM}{INCH}$	$.00\pm0.01$ $.000\pm0.005$ $.0000\pm0.002$	<i>Steven</i>	MAY-31 '13
	ANGLE +0° 30'	RADII	$.00\pm0.25$ $.000\pm0.13$ $.0000\pm0.05$	<i>Johnn</i>	MAY-31 '13
			$+0.45$ -0.15	<i>Billy</i>	MAY-31 '13

DWG. NO.

AST007A02-2